



**Premier
Properties**
Perth



13 Moncreiffe Terrace, Perth, PH2 0DB
Offers Over £325,000

 4  2  1  D



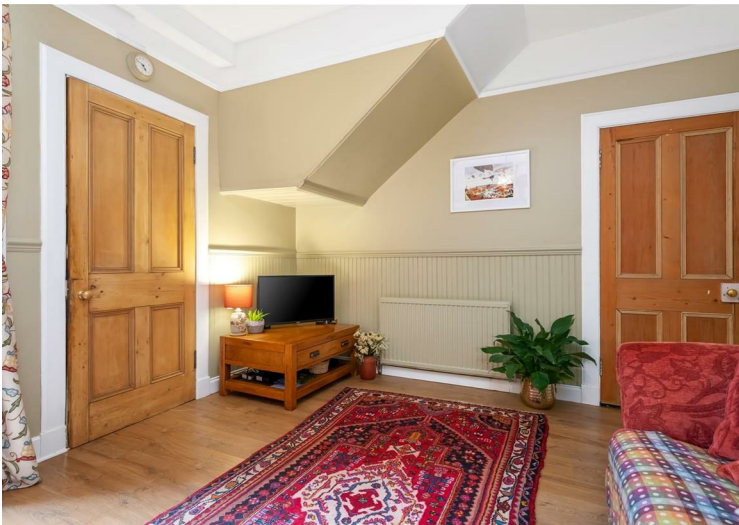
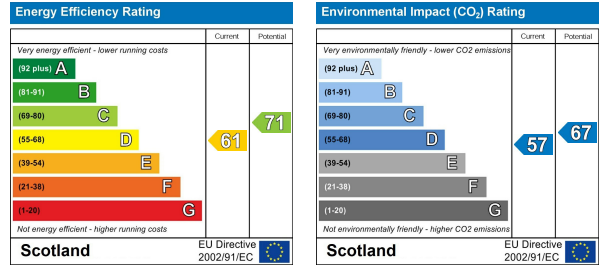
- 4 Bedrooms
- 2 Bathrooms
- Victorian charm throughout
- Gas central heating
- Off street parking
- Private rear garden
- Close to all local amenities
- Close to local schools
- Ideal family home
- Viewing recommended



13 Moncreiffe Terrace, Perth, PH2 0DB

Total: 1284 sq. Ft. 129 m²
 Ground Floor: 774 sq. Ft. 72 M²; 1st Floor: 180 sq. Ft. 17 M²; 2nd Floor: 350 sq. Ft. 33 m²
 Excluded Areas: Utility: 70 sq. Ft. 7 M²; Low Ceiling: 79 sq. Ft. 7 M²; Walls: 147 sq. Ft. 13 m²

All Measurements Are Approximate And For Clarity Purposes Only.



These particulars, whilst believed to be accurate are set out as a general outline only for guidance and do not constitute any part of an offer or contract. Intending purchasers should not rely on them as statements of representation of fact, but must satisfy themselves by inspection or otherwise as to their accuracy. No person in this firm's employment has the authority to make or give any representation or warranty in respect of the property.